

世联地产顾问丛书

# 工业 园

世联地产  
编著  
晋  
级城市  
战略



世联地产  
WORLDWIDE REAL ESTATE CONSULTANTS

2010.3

ISBN 978-7-111-30106-6

I ... .. - - - -  
F424 F291

CIP 2010 043577

22 100037

2010 4 1 1  
170mmx242mm 8.25





“

”

“

”

22

“

”

2010

“

”

“

”

2010 4

# 目录

*Contents*

|

|

|



**1**

|

|

20

“

”

“

”



( )2.14

“ ”

“ ” “ ”

“ ”



1- 2 “ ”



1- 3

1979 8

20 80

|

|

“

|

|

©

|

|



20 80 “ ”



20

80

90

“

” “ ”

“ ”

450

700

300

“ ”

...

14 18 “ ” 1- 5  
18 “ ” 1983 ,  
1995 32  
36  
“ ”  
18  
“ ”  
“ ” 5  
“ ” “ ” “ ” “ ”  
”



|

|

“

”

“

”

“

”



1999 83.. \*!ô12•

	1992 7	7
	“	”
	“	”

1992 12

“

! È (μ°!ô‘@e 3

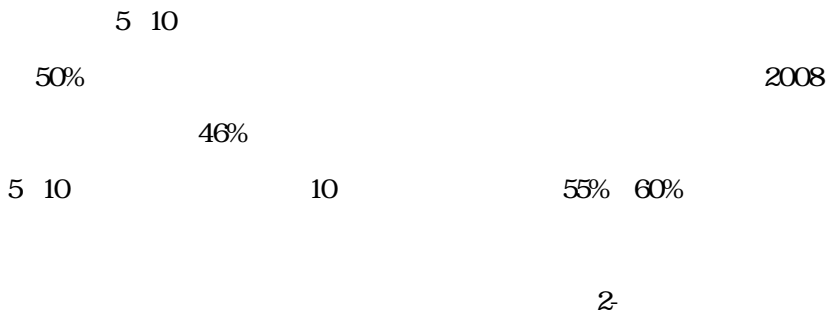
|

|

1995

1992

1-6



2 1

	\$"	\$" ' "	' "
	' "		' "
	\$"		% " #"
	#*)" \$(	# + #" ' %	# + )" ) &
	' # \$ \$&	%q %\$ %	%& (% %

10 15

5 10

15

35%

50%

" "

66

10

|

|

|

|

10%

70%

60%

30%

25% 20

90

^

|

|

“

”

“

”

“

+

”

“

”

| |

“ ”

⊖

sprawl

8 600

2/3

”

“

---

⊖  
1. <http://www.guandian.cn/article/20080520/73399.html>  
2. <http://theory.people.com.cn/GB/49154/49156/3645698.html>

20 80

“ ”

v Andres

Duany v - Elizabeth Plater- Zyberk

traditional neighborhood development TND v

Peter Calthorpe transit - oriented development

TOD

“ ”

600

TOD

TOD

“ TOD ”

“ TND ”

“ 5 ”

|

|

400

“ ”

“ ”

“ ”

“ ”

Panhandle Seaside

“ ”

“ 12 000 ”

⊖

“ ” “ ” smart growth

2000 (APA) 60 “

” Smart Growth America

|

|

“ ”

:êĐ• \\*O@>áp,,đ

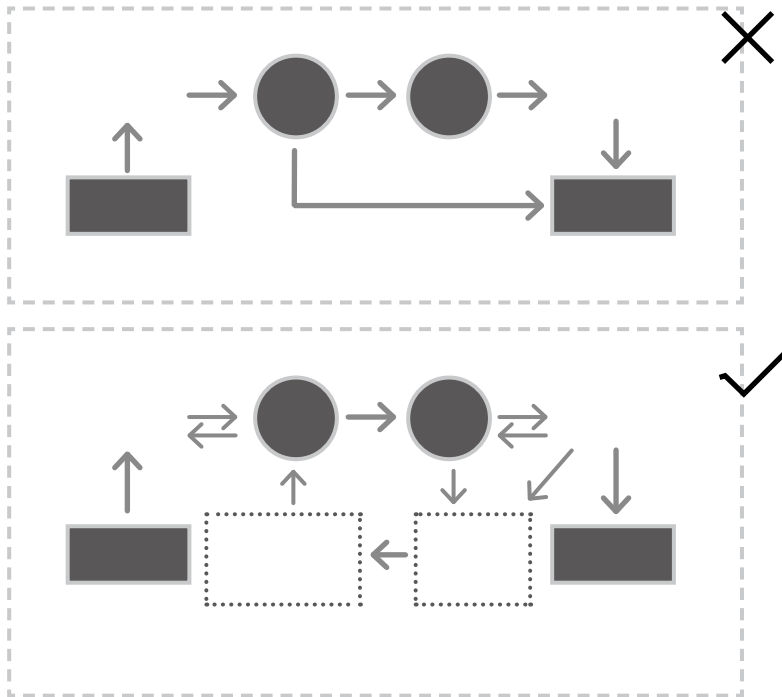
2004

“ ”  
“ ”

2-1

“

”



2-1

|

|

|

|

“ ”

“ ”

“ ”

M50

“ ”

“

” “

” “

” 2004

20 90

“ ”

,

“ ” “ ”

1999

“ ”

2002	1131	1133	720	
	50			50
2004				
			50	M50
2000	50			
		2002	50	
	" 2004	"	"	" 50
			2005 4	50
			" M50	"
M50				
			20	140
				M50

2008

M50

M50

M50

“ ”

2-2



2-2 M50

“ ”



2005 M50

|

|

“ ”

“ ”

“ ”

“ ”

1999 8

“ ”

“ ”

|

|

“ ”

“

”

“ ”

37

2005



2-3

168

24



2-3

2007

4.2

25

2007

54

2010

2-4

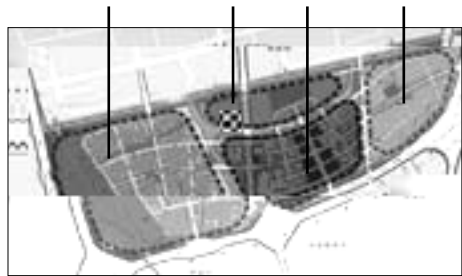
466.77

“ ”

2-5



2-4



2-5





2015

50

|

|

|

|

“

”

“

”

“

”



**3**

1.4

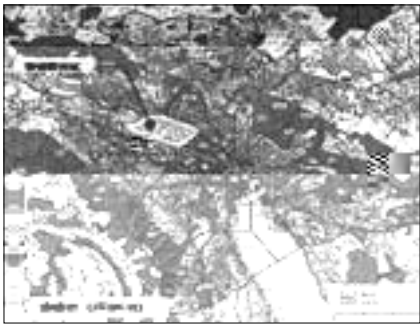
18

| |

3-1 3-2  
20 90

“ ” “ ”  
” 2001  
“ ”

“ ” living mixed city



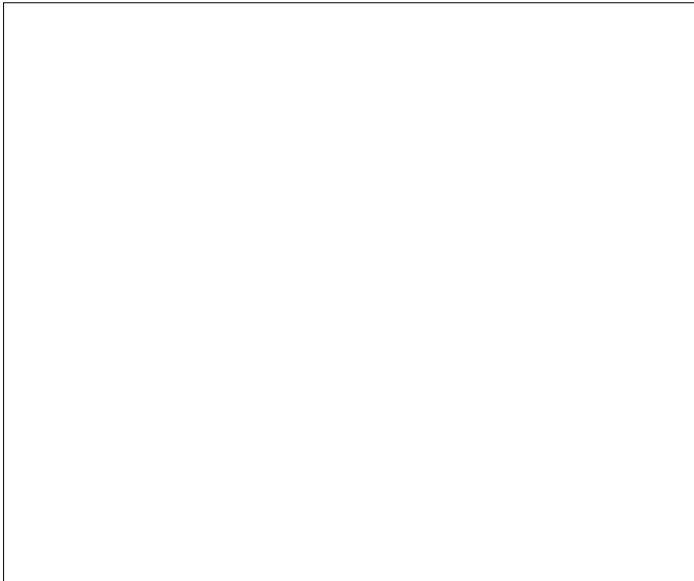
3-1



3-2

Schiffbau

3-3



Schiffbau

3-3 Schiffbau

Technopark

250

1 750

3-4



3-4 Technopark

”

“

|

|

29%

B

ALSOP

...

”

Can you 3S

“ ”

logo

3-5



3-5

|

|

20 30

“ ”

“ ”

140

36

3 2 3 7

1998

“ ”

“ ” “ ”

3 2

				\$ \$"
				\$ \$"
				\$ \$"
				\$ \$" #
				\$ #" \$
				\$ #" \$
				\$ #" \$
				\$ #" %
				\$ #" '
	@!3			\$ #" )
				\$ #" +



|

|

|

|



| |

“ ” “ ” “ ”

120 400

1999  
7% 2% Ÿ

2006 60%  
25% 15%



“ 1999

.....

...

”

|

|



2000

“ ”

0

|

|

130

2

1

200



285

450

4.16

19

3-8



3-8

|

|

1999

45

14

48

48

280

40

|

|

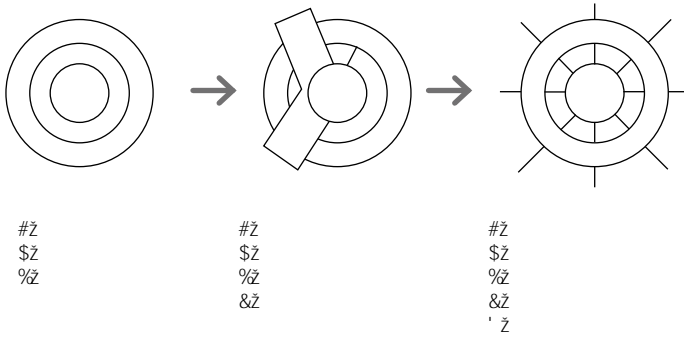
39

|

|

# 4

4 1



4 1

|

|



| |

48  
11 20 80 30%  
40% 50  
4 4  
20  
“ ”

20 60 “ ” “ ”



4 4

“ ”

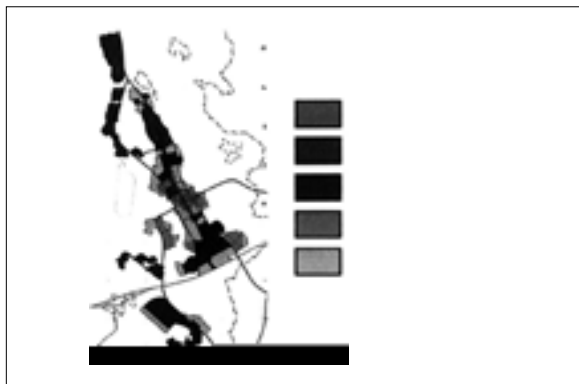
40

1963

1965

1968

4 5



4 5

20

4 6

1972 170

“ ”

1977

1980

43 ( 80%)

9 000

12.4 1990

20



4 6 20 70

1981

8

( “ ” )

1983

4-7 HUD

1985 “ ”



4-7

| |

“

”

4 8 4 9 1985 Joban

1987

1985

CREO

1988

4 10



4 8



4 9 1985

1987

6

10



4 10 20 80

1990

4 11 4 12

1987

1995

2005 8

58

( )

“ ”

130



4 11



4 12

45

	1989	1998		12.7%
1998			18.8	6.5
12.3		2004 3		198
	1998			
2030		35		10
12		25		



1

4 13



4 13

1994 2

5

288

9

| |

80

4 14

15

4 15

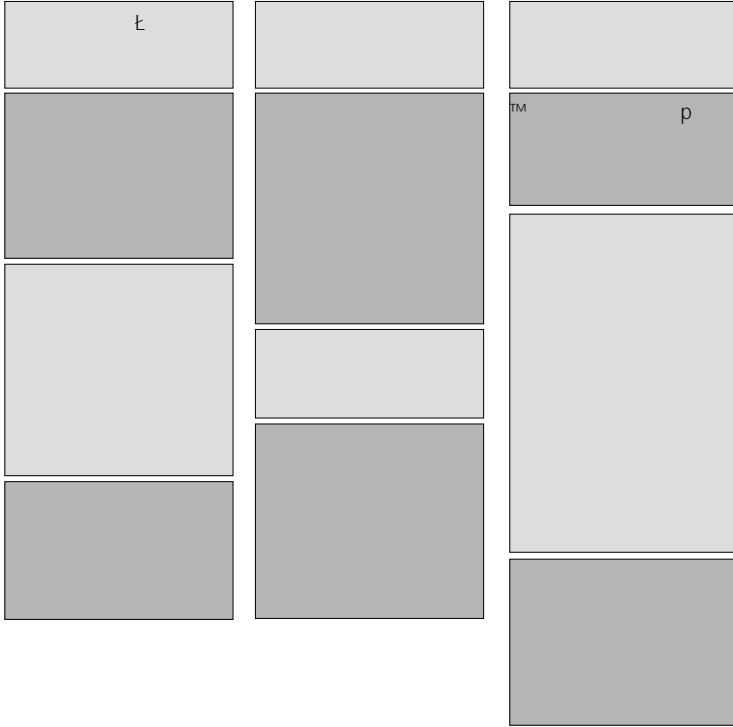
1994 5 12

1994 2 26

11

CSSD

BD 14



| |



1998 2 5

“ ” “ ”

40%

“ ”

“ ”

“ ”

27

20

12

10

8 000

CBD

“ ”

15

|

|

“ ”

25% 3 000

247 /1 7 1 7 5



“ ” “ ”

4 18

10

4



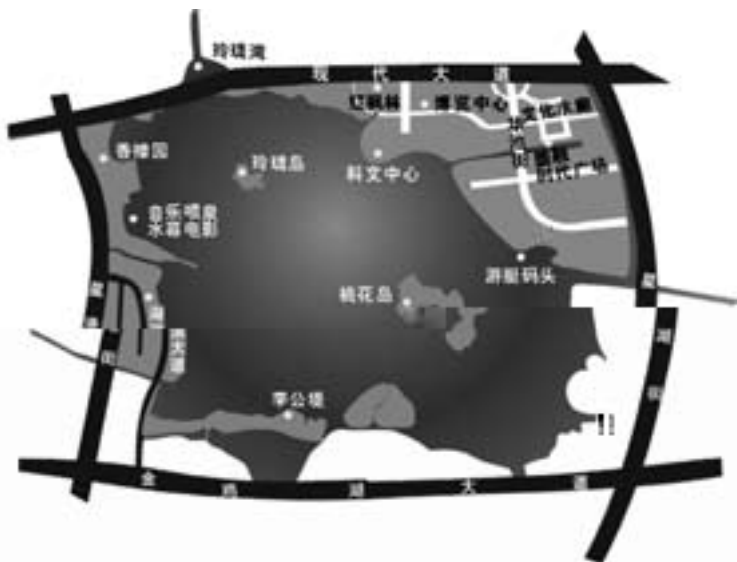
4 18



4-19

5

21 “ ”



4-19

4 20



4 20

4 21

94.52

50

37

1

|

|

1990

95

94.52

1990p1993

95

5.5

9



|

|

16

6

“ ”



( )

10

15

1

10

0.4

41

212

5A

1996 10

|

|



4 25



4 23



4 24

2006 7

2007

“

” “

”

2007

44

12



Office Park

500

2008 Office Park

“ ”

5 Office Park

1 500

“ ”

Office park 2008

CBD 500

4-26



4-26

5

“

”

“

”

“

”

5-1



5-1

| |

Ruhrgebiet 4 593  
1.3 570 9  
2 700 5 24  
50

200 5-2 1811  
19



5-2

|

|

20 80

1957 140

7 47 4 26 4

30 5

64

95

31 11

v

“ ” 20 60

5-3



5-3

Henrichshuette

1854 1987



5-4



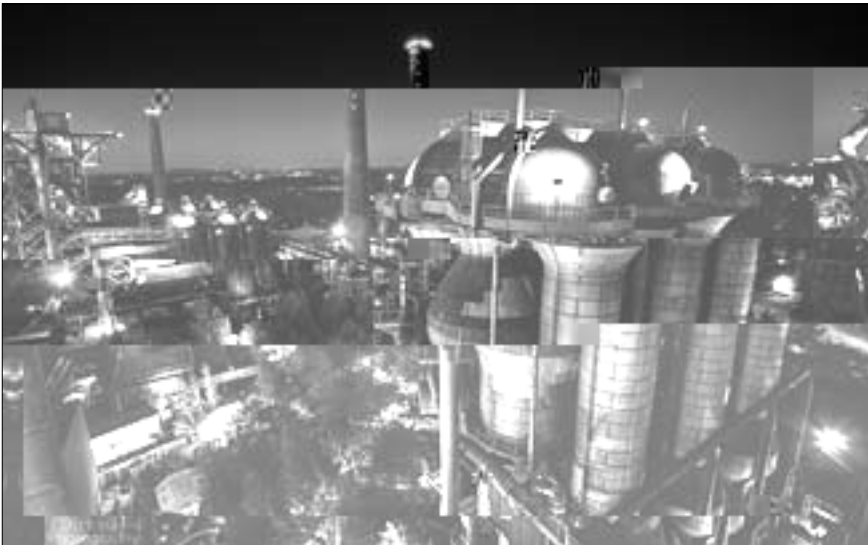
5-5 “ ”

” eco-museum

5-4 5-5

“

### Landschaftspark Duisburg-Nord



5-6

5-6

1985

23

5-7

1758



5-7



shopping mall

Centro

117

67

Gasometer Centro

Gasometer

Centro Gasometer



|

|



| |

110 1.65

5-13 20 70

“ ”

“ ”

“ ” 30

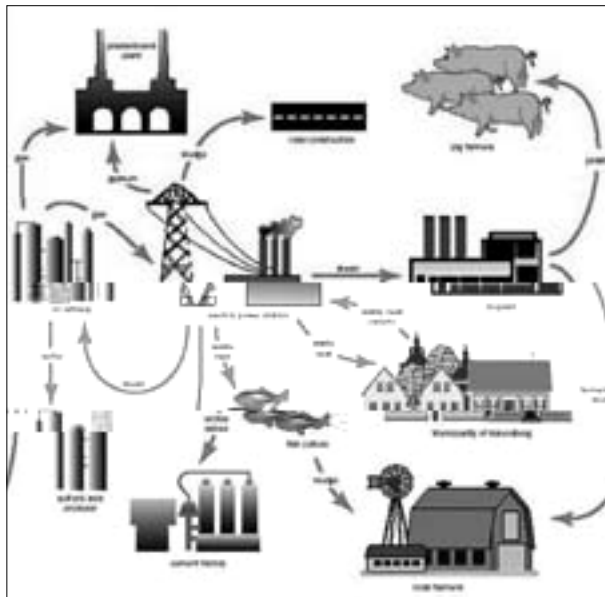


5-13

|

|

5-14



5-14

6 6 19 9 2

190 100 2

60

8  
20  
2  
17.5 1.02  
45 1.5  
11.3  
1.7  
11.5 /  
1.4  
1.18  
6 000  
1 000 5-15



5-15

“ ”

|

|

149

2005 2 16



1997 2010 6  
1990 5.2%  
“ ”  
.....  
2006  
1%GDP 5% 20% GDP  
2007 7  
2007 12 3  
2020 25% 40%  
2008 7 G8  
2050 50%  
2009 12  
2020 30  
.....

Masdar Initiative 5-17

6.4

“ ”

11

“ ”

“ ” “ ( )”

220 1 500 5  
2008 2 2016

2030

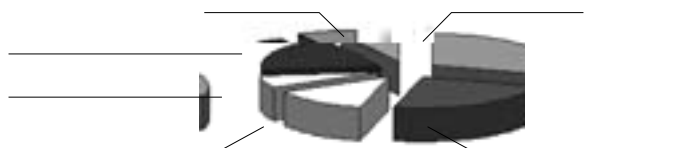


5-17

64

“ ” .....

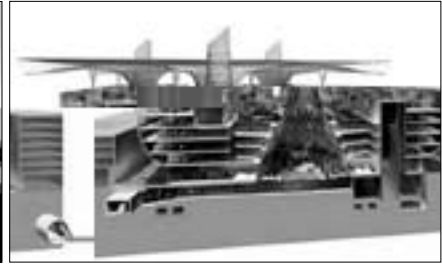
5-18



5-18

3 70

5-19



5-19

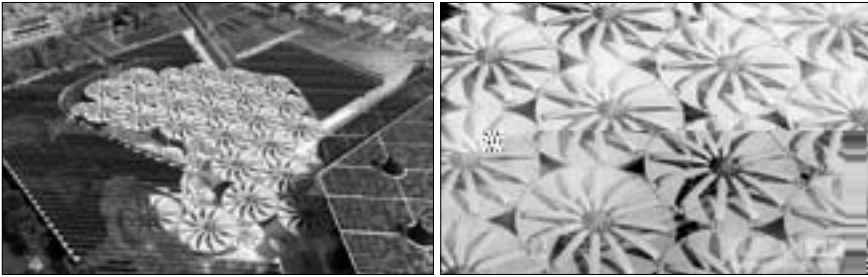
5-20

200

1/4 800

80%

5-21



5-21

8 000

2/5 20 000

5-22





2020

98%

One Planet Living

60

2010

2016

5-23

20%

80%

44

176

|

|

68%

9

2% GDP

7

15

15 51

30

“ ” “

”

“ ”

“ Fair- Fax ” ‘ ’

Sunshine Town

“

”

2020

2005

40% 45%

“

”

- 1 Barry The Effects of Direct Foreign Investment in The Presence of Increasing Returns on Specialization J Journal of Development Economics 2001 34 287-307.
- 2 Bass L. Cleaner production and industrial ecosystems a Dutch experience J Journal of Cleaner Production 1998 6 189-197
- 3 BlomstromMand Kokko A. Foreign Direct Investment and Spillovers of Technology J International Journal of Technology Management 2001 22 435-454.
- 4 Charles Landry The Creative City a toolkit for urban innovations M London Earthscan Publishment Ltd 2000
- 5 Cohen Rosenthal E. Eco- industrial Development Program Cornell Work and Environment Initiative N Eidpupdate Cornell University 2001
- 6 Edward J. Feser, Edward M. Bergman. National Industry Cluster Templates A Framework For Applied Regional Cluster Analysis J Regional Studies 2000 34 1 1-19
- 7 Kift Roy Tour the Ruhr the English Language Guide M . Essen Klartext Verlag 2000.
- 8 Kijo Localised Technical Progress and Transfer of Technology and Economic Development Journal of Economic Theory J 1993 6 585-595
- 9 Kommunalverband Ruhrgebiet. The Ruhrgebiet: facts and figures M . Esser: Wöste Druck, Essen- Keittwig 2001.
- 10 Manufactured Sites rethinking the post- industrial landscape M . London & NewYork Spon Press 150-161.
- 11 Sjunholm, F. Productivity Growth in Indonesia The Role of Regional Characteristics and Foreign Investment J Economic Development and Cultural Change 1999 3 559-584.
- 12 UNCTAD World Investment Report 2005 United Nations New York and Geneva 2005.
- 13 . " " R 2004
- 14 D 2007.



