

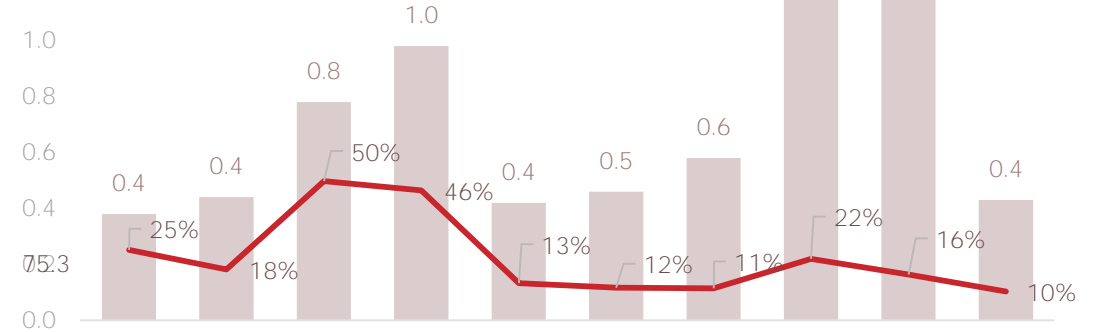
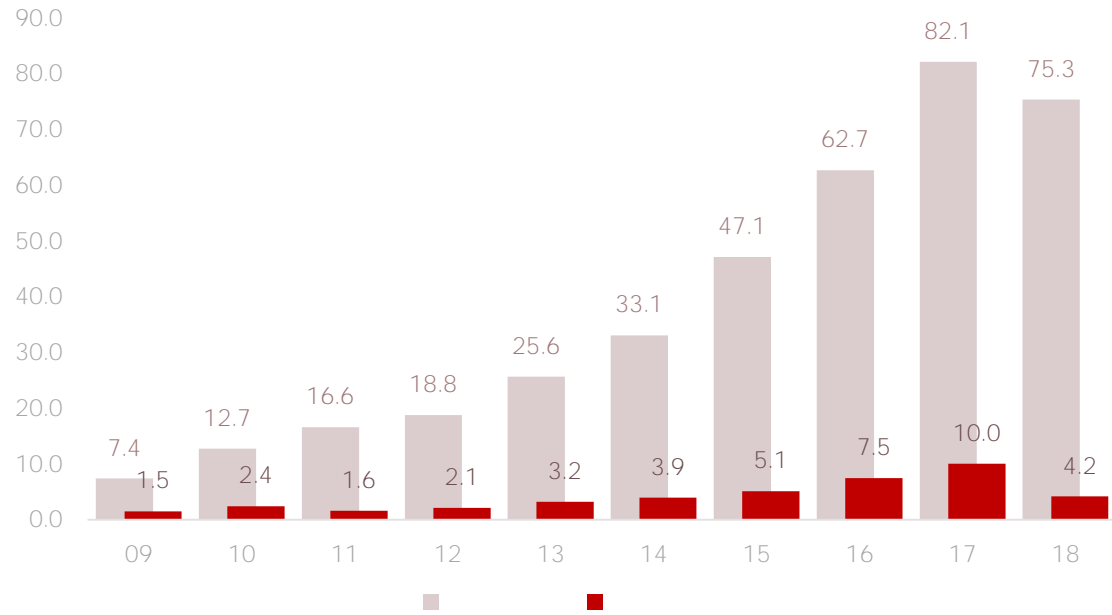
002285.SZ

2019 11

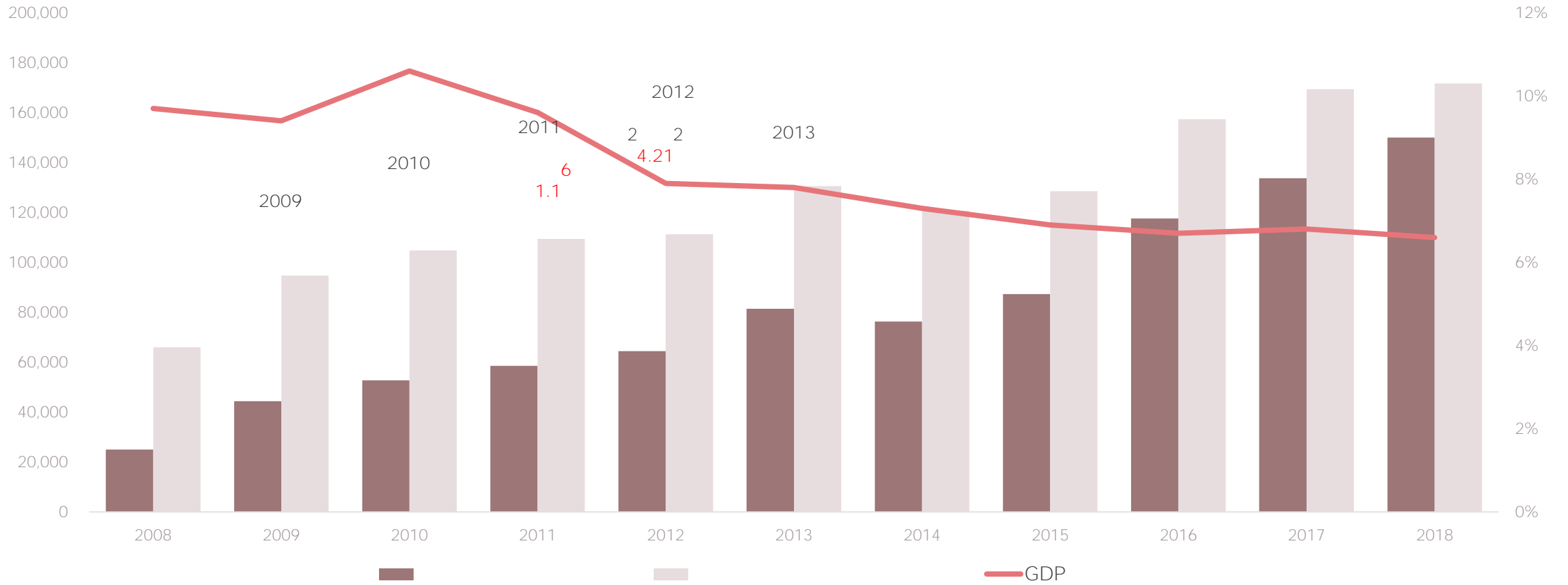


41.5

7.8









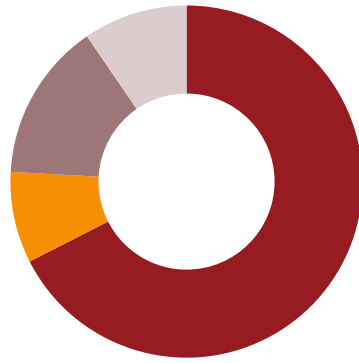
— " " " " "

2009 -



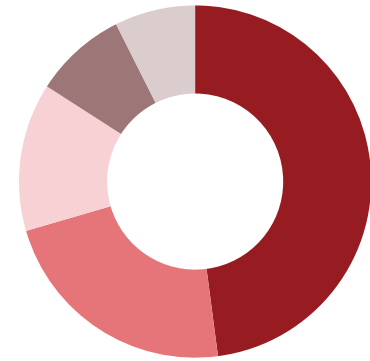
- IPO
-
-

2014 -

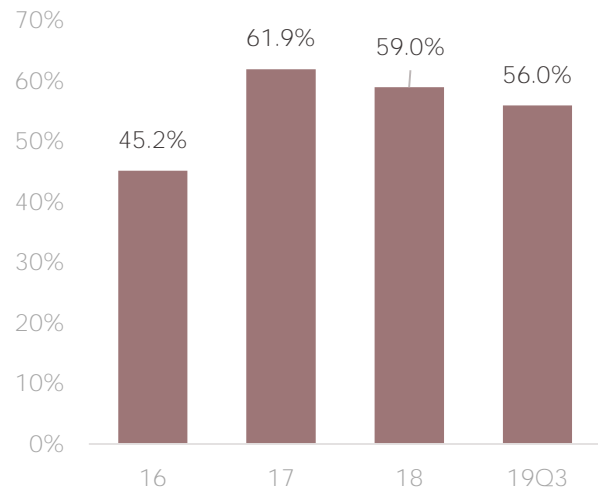


-
-
- 2014 " "
- " " "
- "

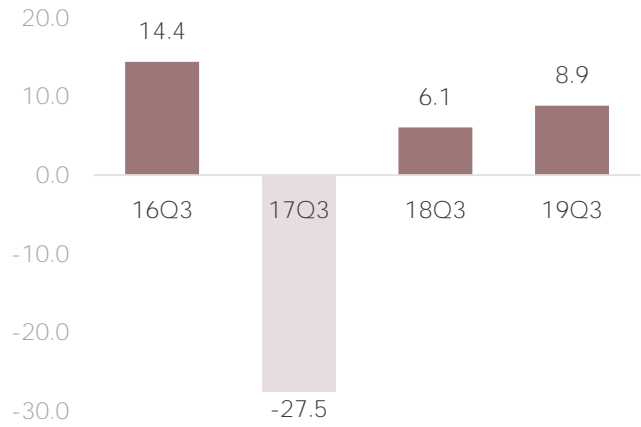
2018 -



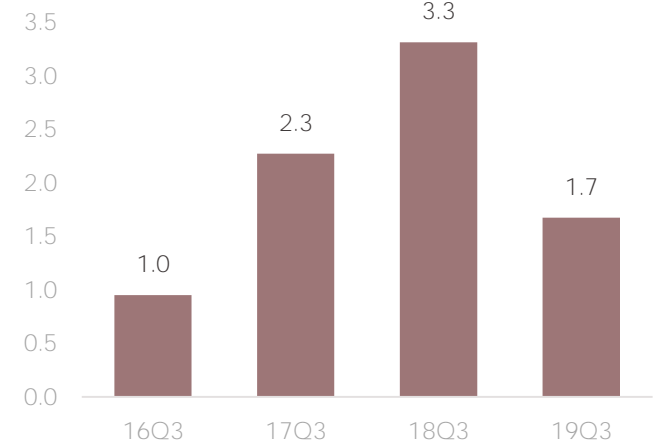
-
- 2019
-



- 6.1
-

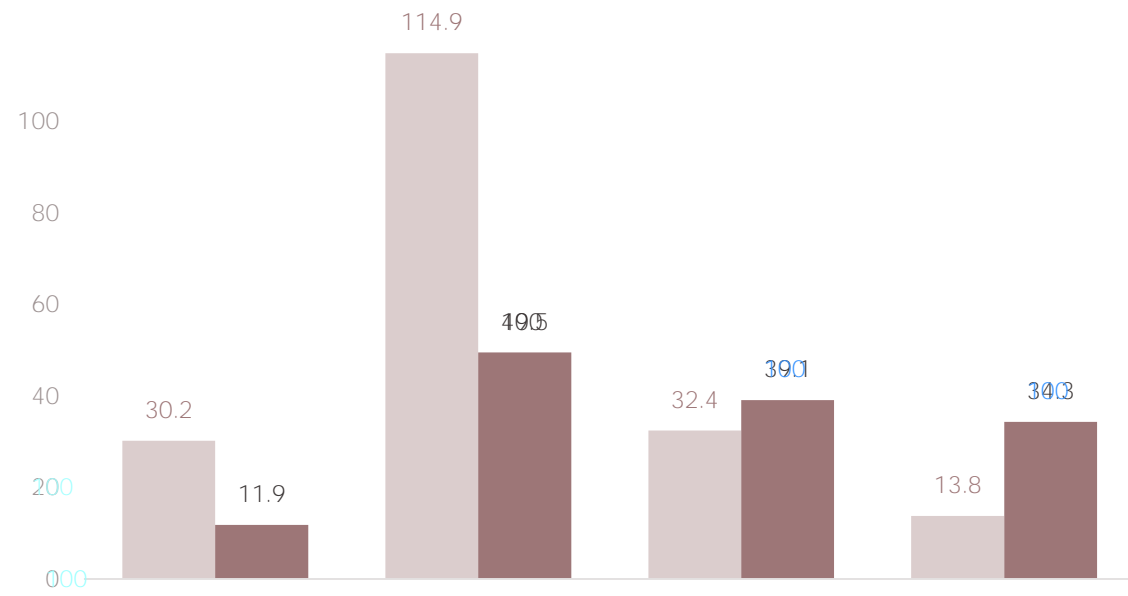


- 8.9
- 2019 46.2%

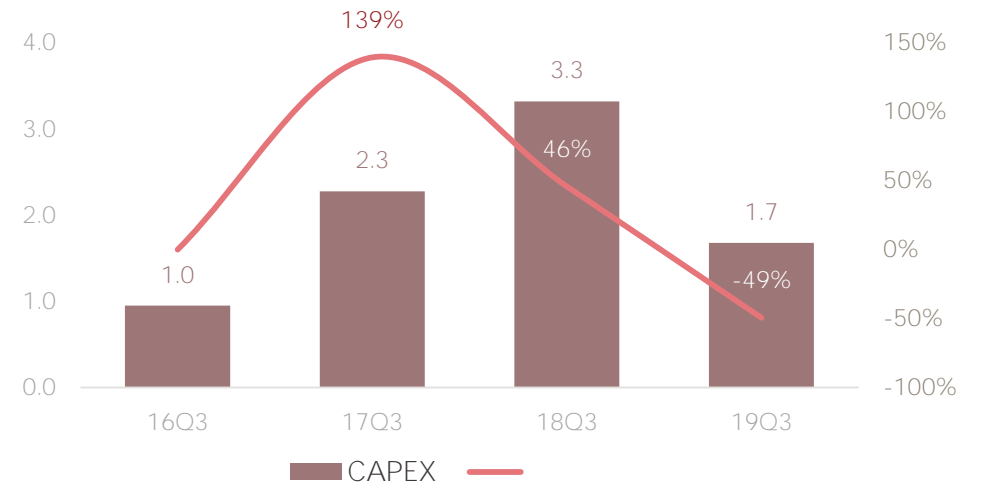


- 1.7
- ---





2019



-
-
-
-
-

4

2030 3 /

IT
2019

Wind

PMLS



58



PMLS



PMLS

PMLS

THANKS